



# BOAT SALES

LAKELAND LEISURE ESTATES



## Ad - Lib - Cruiser Stern

**Price: £34,995**

### Key Features

<b>Berths:</b>	4
<b>Length &amp; Type:</b>	45ft Narrowboat
<b>Year:</b>	1998

### Description

Step aboard Ad-Lib, a charming 45ft cruiser stern narrowboat with the potential to become your dream home on the water. Designed with comfort and practicality in mind, this narrowboat is well-suited for leisurely cruising or a cosy liveaboard lifestyle. Though it requires some updating, its thoughtfully designed spaces offer an excellent foundation for personalization and a relaxed life on the canals.

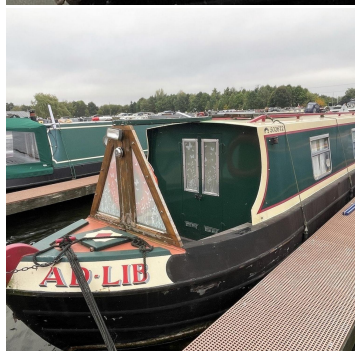
The galley on Ad-Lib is both functional and inviting, equipped with a 4-burner gas hob, an under-counter oven/grill, and a Shoreline 12v fridge to handle all your cooking needs. The stainless steel sink with a drainer and mixer tap provides convenience, while the generous worktops, cupboards, and drawers offer plenty of space to store kitchen essentials. Whether you're preparing a quick meal or a full dinner, this galley has everything needed to make cooking aboard enjoyable.

The cosy lounge is the heart of Ad-Lib, featuring a large upholstered bench that effortlessly converts into a comfortable double bed, making it ideal for hosting guests or stretching out for an afternoon nap. The lounge also includes a 12v TV for entertainment, a storage cupboard and wardrobe for your belongings, and a solid fuel stove, creating a warm and inviting space to relax, even on chilly evenings. It's a perfect spot to unwind after a day on the water.

The bedroom is a sanctuary of comfort, offering a full-size queen double bed with ample storage underneath, perfect for stowing away bedding and other essentials. A spacious wardrobe provides additional storage, and the glazed double doors lead out onto the well deck, inviting natural light into the room and offering views of your surroundings. Whether you're resting for the night or enjoying the peaceful canal scenery, this bedroom promises restful moments.

Ad-Lib's bathroom is both functional and well-appointed, with a hip bath that includes a shower overhead for flexible bathing options. A Porta Potti cassette toilet offers convenience, while the washbasin sits atop a vanity unit, providing storage for toiletries. Additionally, a wall-mounted cupboard with a mirrored door adds extra storage space, ensuring that all your essentials are easily accessible. This bathroom is designed to meet your everyday needs while adding a touch of comfort to life aboard.

Ad-Lib offers an excellent blend of potential and charm, providing a perfect foundation for those seeking an adventurous life afloat or a peaceful retreat on the water.



#### Disclaimer

Whilst every care has been taken in the preparation of these specifications, no guarantee is given or implied as to their accuracy. These particulars are intended only as a guide and they do not constitute a term of any contract. Lakeland Leisure Estates Ltd advises prospective purchasers to obtain an independent survey from a qualified Marine Surveyor to satisfy themselves as to the condition of the craft.

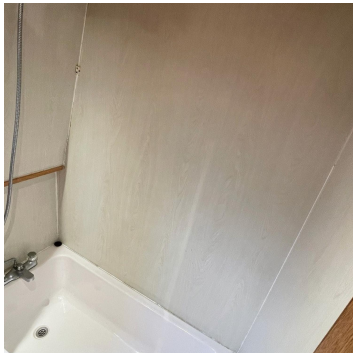
Contact Us

Call: 07585 956 804

Email: [andy@lakelandleisureboatsales.co.uk](mailto:andy@lakelandleisureboatsales.co.uk)

[www.lakelandleisureboatsales.co.uk](http://www.lakelandleisureboatsales.co.uk)





## Additional Specs

- **Length/ Boat Style:** 44' 10" / Cruiser Stern
- **Year:** 1998
- **Number of bathrooms:** 1
- **Berths:** 2 + 2
- **Water Tank Capacity:** 100 Gallons approx. / Stainless Steel
- **Fuel Tank Capacity:** 55 Gallons approx.
- **Hull By/ Fit out by:** Eastern Caravans & Boats
- **Layout stern to bow:** Galley, Saloon, Bathroom, Bedroom
- **Engine and gearbox:** Thornycroft 90 diesel 34hp / PRM 120
- **Engine hours/Last service:** 4067 / Owner Serviced
- **Boat Safety Certificate:** 10/05/2027
- **Last Blacking & type:** 2021 / Bitumen
- **Hull thickness:** 10:6:4
- **Inspection hatch and location:** Weed hatch via cruiser stern
- **P/out or Cassette:** Cassette
- **Internal cabin height:** 6' 3"
- **Insulation:** Polystyrene
- **Last Survey:** October 2019
- **Batteries:** 5 = 1 x Starter & 4 x Domestic
- **Electric Supply:** Engine, Shoreline, Domestic Batteries, Solar Panel, 1.5Kw Inverter, Battery Charger
- **Hot Water Supply:** Engine, Calorifier, Gas Boiler
- **Cabin Heating:** Solid Fuel Stove
- **Central heating type:** Gas Boiler to Radiators etc.
- **Gas Cylinders No+ type:** 2 x 13Kg / Propane

### Disclaimer

Whilst every care has been taken in the preparation of these specifications, no guarantee is given or implied as to their accuracy. These particulars are intended only as a guide and they do not constitute a term of any contract. Lakeland Leisure Estates Ltd advises prospective purchasers to obtain an independent survey from a qualified Marine Surveyor to satisfy themselves as to the condition of the craft.

Contact Us

Call: 07585 956 804

Email: [andy@lakelandleisureboatsales.co.uk](mailto:andy@lakelandleisureboatsales.co.uk)

[www.lakelandleisureboatsales.co.uk](http://www.lakelandleisureboatsales.co.uk)

