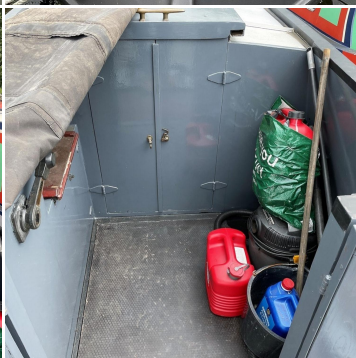




# BOAT SALES

LAKELAND LEISURE ESTATES



## Josie & I'm - Semi Trad

**Price: £52,000**

### Key Features

<b>Berths:</b>	2
<b>Length &amp; Type:</b>	57ft Semi Trad
<b>Year:</b>	2003

### Description

Josie & I'm is a beautifully maintained 57-foot semi-traditional narrowboat, offering a blend of classic design and modern comfort. Built in 2003 by the renowned Tyler Wilson and meticulously fitted out by Louis & Joshua Boatbuilders Ltd, this vessel is a testament to superior craftsmanship. Equipped with a Beta Marine 38hp engine, Josie & I'm ensures a smooth and enjoyable cruising experience, making her a standout choice for discerning boaters.

Step into the galley, where culinary excellence meets stylish design. The kitchen features a sleek free-standing 4-burner cooker with a separate oven and grill, perfect for preparing gourmet meals. A microwave and a fridge with a freezer box provide added convenience. The designer grey sink and drainer, complemented by a matching mixer tap and a filtered drinking water tap, add a touch of elegance. Enjoy meals at the breakfast bar with two stools, surrounded by solid wood worktops that offer both functionality and aesthetic appeal. Ample storage cupboards and drawers, both high and low, ensure you have plenty of space for all your culinary essentials.

The saloon is a haven of relaxation and sophistication. The "as new" two-seater reclining leather sofa invites you to unwind while the Bubble corner solid fuel stove adds a cosy touch. A solid oak storage chest with multiple drawers offers practical storage solutions. Enjoy your favourite shows on the extra-large smart TV (approximately 50"), or work from the dedicated office desk and chair, perfect for those who need to stay connected. The saloon features elegant engineered oak planking and recent designer radiators, enhancing the boat's modern aesthetic. Glazed steel doors lead out to the large well deck, providing access to the gas locker and a space for enjoying the great outdoors.

The bedroom features a comfortable fixed double bed with overhead lighting, ensuring a restful night's sleep. Ample storage is provided to keep your belongings organised. Access to the semi-trad stern deck is made easy with offset steps, facilitating effortless piloting and navigation.

The off-corridor bathroom is designed for both style and functionality. It includes a macerator pump-out toilet, a wash basin set over a vanity unit, and a corner shower with a glazed door. The bathroom also offers ample storage and a radiator to keep you warm.

Josie & I'm is a rare find in the world of narrowboats, combining timeless design with modern amenities and exceptional care. Her pristine condition, combined with her superior build quality and thoughtful upgrades, make her a must-see for anyone looking to experience luxury afloat. Make Josie & I'm your new home on the water and embark on your next adventure in unparalleled comfort and style.

### Disclaimer

Whilst every care has been taken in the preparation of these specifications, no guarantee is given or implied as to their accuracy. These particulars are intended only as a guide, and they do not constitute a term of any contract. Lakeland Leisure Estates Ltd advises prospective purchasers to obtain an independent survey from a qualified Marine Surveyor to satisfy themselves as to the condition of the craft.

Contact Us

Call: 07513 708099

Email: [barton@lakelandleisureboatsales.co.uk](mailto:barton@lakelandleisureboatsales.co.uk)

[www.lakelandleisureboatsales.co.uk](http://www.lakelandleisureboatsales.co.uk)





## Additional Specs

- **Hull Builder/Fit-Out:** Tyler Wilson / Louis & Joshua
- **Engine and Gearbox:** Beta Marine 38hp / PRM 120
- **Engine Hours/Last Service:** 4,426 / 2023
- **Boat Safety Certificate:** New, included with sale
- **Last Blacking:** Bitumen / April 2020 by Great Haywood Marine Services
- **Hull Thickness:** 10:6:5:4
- **Inspection Hatch Location:** Weed hatch via semi-trad stern
- **Toilet Type:** Macerator Pump-Out
- **Internal Cabin Height:** 6' 4"
- **Insulation:** Spray Foam
- **Last Survey:** 2016
- **External Covers:** Tonneau Cover to Semi-Trad Stern
- **Side Hatches:** Yes x 2
- **Batteries:** 5 (1 x Starter & 4 x Domestic)
- **Electric Supply:** Engine, Shoreline, Domestic Batteries, 2Kw Victron Inverter/Charger
- **Galvanic Isolator:** Yes
- **Hot Water Supply:** Engine, Calorifier, Eberspacher diesel boiler
- **Cabin Heating:** Bubble solid fuel stove
- **Central Heating:** Eberspacher diesel boiler to radiators
- **Gas Cylinders:** 2 x 13Kg Propane

### Disclaimer

Whilst every care has been taken in the preparation of these specifications, no guarantee is given or implied as to their accuracy. These particulars are intended only as a guide, and they do not constitute a term of any contract. Lakeland Leisure Estates Ltd advises prospective purchasers to obtain an independent survey from a qualified Marine Surveyor to satisfy themselves as to the condition of the craft.

Contact Us

Call: 07513 708099

Email: [barton@lakelandleisureboatsales.co.uk](mailto:barton@lakelandleisureboatsales.co.uk)

[www.lakelandleisureboatsales.co.uk](http://www.lakelandleisureboatsales.co.uk)

