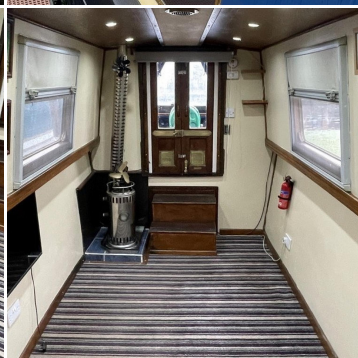




BOAT SALES

LAKELAND LEISURE ESTATES



One Big If - Cruiser Stern

Price: £48,500

Key Features

Berths:	3
Length & Type:	58ft Cruiser Stern
Year:	2002

Description

Step aboard One Big If, a beautifully maintained 58-foot Cruiser Stern narrowboat that combines timeless craftsmanship with modern amenities. Built by the renowned Liverpool Boat Co in 2002 and thoughtfully fitted out by its original owner, Mark Johnson, this narrowboat offers a unique blend of style, comfort, and functionality. While it was purchased as a Sailaway and does not come with an RCD, the vessel's high-quality finishes, extensive features, and meticulous care make it an exceptional choice for both long-term cruising and as a charming liveaboard home.

The galley on One Big If is both practical and stylish, featuring a composite sink and drainer with a sleek mixer tap. The generous worktop space is complemented by ample storage options, including multiple cupboards and drawers, allowing for easy organization of kitchen essentials. The full-size, freestanding 4-burner gas cooker with a separate oven and grill is perfect for preparing meals onboard. A Bush fridge keeps your ingredients fresh, while a Siemens full-size washing machine ensures you have the convenience of laundry facilities right on the boat.

The lounge area is designed for comfort and relaxation. Anchored by the Refleks diesel stove, this space radiates warmth and charm. The large-screen smart TV provides entertainment at your fingertips, and the open floor plan allows for versatile furniture arrangements. Whether you prefer cosy armchairs or a plush sofa, there's ample room to create your ideal lounging space.

This multi-use room serves as both a secondary bedroom and a utility space. The single bed, with generous storage underneath, provides a comfortable sleeping area, while the room also houses the main electrical controls, including the inverter/charger, solar MPPT, and immersion switch. This dual-purpose room is perfect for guests, additional storage, or as a dedicated space for managing the boat's systems.

The main bedroom is a haven of peace and tranquillity. A full-size double bed ensures a restful night's sleep, surrounded by abundant storage options, both high and low. The well-planned cabinetry and shelving offer space for all your belongings, keeping the room clutter-free and serene.

The bathroom on One Big If is both practical and inviting. It features a Thetford cassette toilet with three spare cassettes for convenience, a ceramic raised bowl wash basin elegantly mounted over a vanity unit, and a full-size shower with bi-fold glazed doors. With ample storage for toiletries and linens, this bathroom is designed to meet all your daily needs in comfort and style.

With its creamy exterior and well-considered layout, One Big If offers a perfect blend of practicality and elegance. Whether you're embarking on an extended cruise or seeking a full-time floating home, this narrowboat provides everything you need for a comfortable and enjoyable life on the water.

Disclaimer

Whilst every care has been taken in the preparation of these specifications, no guarantee is given or implied as to their accuracy. These particulars are intended only as a guide and they do not constitute a term of any contract. Lakeland Leisure Estates Ltd advises prospective purchasers to obtain an independent survey from a qualified Marine Surveyor to satisfy themselves as to the condition of the craft.

Contact Us

Call: 07513 708099

Email: barton@lakelandleisureboatsales.co.uk

www.lakelandleisureboatsales.co.uk





Additional Specs

- **Length/ Boat Style:** 58ft Cruiser Stern
- **Year:** 2002
- **Number of bathrooms:** 1
- **Berths:** 3
- **Water Tank Capacity:** Unknown – Water Gauge
- **Fuel Tank Capacity:** 160 Litres
- **Hull By/ Fit out by:** Liverpool Boat Co / First Owner Fit Out (NB: No RCD)
- **Layout stern to bow:** Bedroom 2 / Utility, Bathroom, Bedroom, Galley, Saloon
- **Engine and gearbox:** Barrus Shire 4 Cylinder Diesel / PRM 150
- **Engine hours/Last service:** Not Recorded / December 2023
- **Boat Safety Certificate:** 04/05/2028
- **Last Blacking & type:** September 2023 Bitumen on 2 Pack
- **Hull thickness:** 10:6:5:4
- **Inspection hatch and location:** Weed hatch via cruiser stern
- **P/out or Cassette:** Thetford cassette + 3 x spare cassettes
- **Internal cabin height:** 6' 3"
- **Insulation:** Spray Foam
- **Last Survey:** April 2010
- **External Covers:** Full Pram Cover to Cruiser Stern & Cratch Cover to Well Deck both serviceable
- **Side Hatches and location:** 1 x Midships / Starboard
- **Batteries:** 7 – 1 x Starter & 6 x 2v Traction Batteries
- **Electric Supply:** Engine, Shoreline, Solar Panels 3 x 175w & MPPT, Traction Batteries, 2.5Kw Sterling Inverter/Charger
- **Galvanic Isolator:** Yes
- **Hot Water Supply:** Engine, Calorifier, Immersion
- **Cabin Heating:** Refleks Diesel Stove – supplied by separate gravity fed 20 litre tank under bow locker
- **Gas Cylinders No & type:** 2 x 13Kg / Propane – with manual change over

Disclaimer

Whilst every care has been taken in the preparation of these specifications, no guarantee is given or implied as to their accuracy. These particulars are intended only as a guide and they do not constitute a term of any contract. Lakeland Leisure Estates Ltd advises prospective purchasers to obtain an independent survey from a qualified Marine Surveyor to satisfy themselves as to the condition of the craft.

Contact Us

Call: 07513 708099

Email: barton@lakelandleisureboatsales.co.uk

www.lakelandleisureboatsales.co.uk

