



# BOAT SALES

LAKELAND LEISURE ESTATES



## Thursday Child - Narrowboat

**Price: £29,995**

### Key Features

<b>Berths:</b>	2
<b>Length &amp; Type:</b>	35ft Narrowboat
<b>Year:</b>	1989

### Description

Step aboard Thursday Child, a beautifully crafted 35ft narrowboat from 1989, where classic design meets cosy comfort. Perfect for two, this charming vessel offers the ideal space to explore the waterways while feeling right at home. With its bright and airy interior paired with a striking traditional red exterior, Thursday Child is designed for both relaxation and adventure.

The heart of the boat, the galley, is thoughtfully equipped with everything you need to prepare meals while cruising. Featuring a gas hob, oven, and grill, it provides all the tools to cook up a hearty meal. A sleek sink with taps sits conveniently alongside ample worktop space, allowing you to chop, prepare, and serve with ease. Storage is plentiful with base units, keeping the galley neat and organised. The built-in spice rack adds a touch of culinary flair, while the fridge keeps your fresh ingredients cool for extended journeys.

At the stern of the boat, the master bedroom offers a sanctuary of relaxation. The fixed king-size bed provides ultimate comfort for restful nights, with soft bedding and plenty of space to stretch out. The room is bathed in soft natural light during the day, creating a serene atmosphere. A TV is mounted perfectly for viewing from bed, offering entertainment as you unwind after a day on the water. Shelving and nooks provide handy storage for personal items, ensuring the room feels spacious yet cosy.

The bathroom is a practical and inviting space, with a walk-in shower enclosure that offers a refreshing escape after a day of adventure. The privacy shower curtain ensures comfort, while the pump-out toilet adds convenience for longer stays on the water. Finished in a clean, simple design, the bathroom feels bright and functional, with enough space to move comfortably.

The heart of the boat's living space, the lounge is both welcoming and practical. Two comfortable chairs are perfectly positioned in front of the Hobbit multifuel stove, ideal for cosying up on cooler evenings. The warm glow of the stove creates a perfect ambiance, making this space feel like a true home away from home. A side table holds your favourite book or drink, while the pull-out table serves as a dining space for two, or a practical work area when needed. Large windows bring in natural light and offer stunning views of the waterways as you cruise.

With its bright white interior throughout, Thursday Child feels spacious, clean, and calming, creating a warm and homely retreat on the water. The traditional red exterior gives this narrowboat a classic, eye-catching appeal as it glides gracefully along the canals, embodying the perfect blend of tradition and comfort. Whether you're looking for a peaceful getaway or an adventurous cruise, Thursday Child is your ideal companion.



#### Disclaimer

Whilst every care has been taken in the preparation of these specifications, no guarantee is given or implied as to their accuracy. These particulars are intended only as a guide and they do not constitute a term of any contract. Lakeland Leisure Estates Ltd advises prospective purchasers to obtain an independent survey from a qualified Marine Surveyor to satisfy themselves as to the condition of the craft.

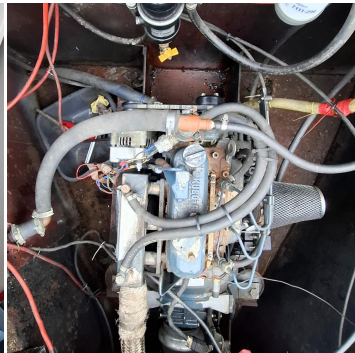
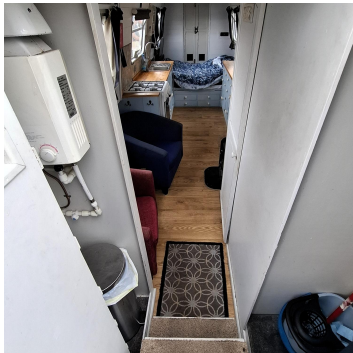
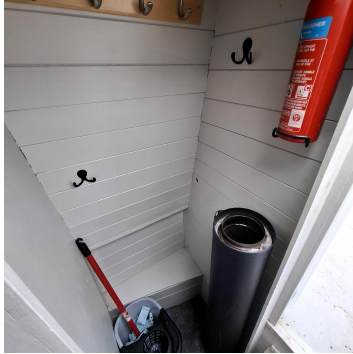
Contact Us

Call: 07513 708099

Email: [barton@lakelandleisureboatsales.co.uk](mailto:barton@lakelandleisureboatsales.co.uk)

[www.lakelandleisureboatsales.co.uk](http://www.lakelandleisureboatsales.co.uk)





## Additional Specs

- **Length/ Boat Style:** 35ft
- **Year:** 1989
- **Berths:** 2
- **Water Tank Capacity:** 350 ltrs
- **Fuel Tank Capacity:** 110 ltrs
- **Hull By/ Fit out by:** J D Manne
- **Engine and gearbox:** Kubota / Hurth gear box
- **Engine hours/Last service:** 5921 hrs 20th March 2024
- **Boat Safety Certificate:** June 2027
- **Last Blacking & type:** March 2024 Bitumen
- **Hull thickness:** 10 / 5 / 4
- **Inspection hatch and location:** Stern under steps
- **P/out or Cassette:** Pump Out
- **Internal cabin height:** 6' 2"
- **Insulation:** Polystyrene
- **Last Survey:** 24th July 2023
- **External Covers:** no
- **Bowthruster:** no
- **Batteries:** 1 x starter & 2 x 115ah domestic
- **Electric Supply:** Engine, inverter, solar panel
- **Hot Water Supply:** Calorifier / Gas boiler for instant hot water
- **Gas Cylinders No+ type:** 1 x 13kg & 1 x 6kg propane gas cylinders

### Disclaimer

Whilst every care has been taken in the preparation of these specifications, no guarantee is given or implied as to their accuracy. These particulars are intended only as a guide and they do not constitute a term of any contract. Lakeland Leisure Estates Ltd advises prospective purchasers to obtain an independent survey from a qualified Marine Surveyor to satisfy themselves as to the condition of the craft.

Contact Us

Call: 07513 708099

Email: [barton@lakelandleisureboatsales.co.uk](mailto:barton@lakelandleisureboatsales.co.uk)

[www.lakelandleisureboatsales.co.uk](http://www.lakelandleisureboatsales.co.uk)

